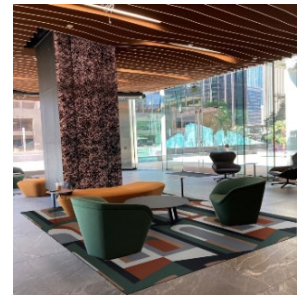
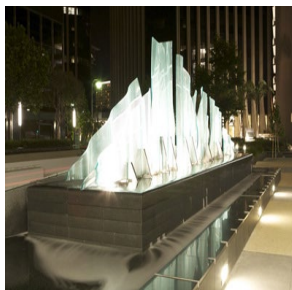


March 2025

| SUITE | OCCUPANCY | SIZE | DESCRIPTION |
|-------|-----------------|--------|--|
| 102 | Immediate | 2,411 | Ground floor for restaurant use. |
| 110 | Immediate | 2,185 | Ground floor for retail use. |
| 209 | Immediate | 1,825 | Open floorplan layout with window views, kitchen, and 1 office. |
| 215 | Immediate | 1,055 | Reception area, conference room and two window line offices with northern views. |
| 245 | Immediate | 2,522 | Double doors with stone flooring in reception, open work area, breakroom and 6 glass line offices with northern views. |
| 315 | Immediate | 7,355 | Open reception area, kitchen, I.T. room, 2 window line conference rooms, 2 open work areas, 13 offices with 11 having window line northern views. |
| 412 | Immediate | 1,559 | Reception, conference room, galley, and 4 offices. |
| 415 | Immediate | 1,582 | Reception area, glass window conference room, kitchen/storage and 2 glass-lined offices. |
| 425 | Immediate | 7,534 | Double door entry, reception area, 2 kitchens, large and small conference rooms, 12 offices with windows, I.T. room, File/Storage/Copy room and 2 open bullpen areas for staff support. |
| 510 | Immediate | 1,129 | 2 window lined offices, galley/workroom area and conference room. |
| 515 | Immediate | 1,055 | Lobby, kitchen, open area, window lined office. |
| 550 | Immediate | 5,047 | Reception area, conference rooms, open workspace area, 10 window lined offices, galley for kitchen and storage. |
| 612 | Immediate | 1,345 | Reception, conference room, 2 window lined offices, workroom with kitchen. |
| 618 | Immediate | 3,394 | Lobby/reception area, I.T./storage room, breakroom, 1 office with vision panel, 4 offices with views, 2 work areas, 1 conference room with partial glass wall and windows with southern views. |
| 716 | Immediate | 1,704 | Lobby/Reception area, glass window conference room, 1 sidelight window office and 2 window lined offices. |
| 815 | Immediate | 3,500 | Reception area, conference room, 8 offices and kitchen/breakroom. |
| 914 | Immediate | 3,328 | Reception/lobby area, conference room, window lined offices, workstations, kitchen and storage area. |
| 1011 | Immediate | 2,469 | Lobby, workstations, kitchen, glass lined offices, conference room and work room/storage. |
| 1014 | Immediate | 4,578 | |
| 1017 | Immediate | 4,893 | Double door entry, lobby, reception area, breakroom, open work area, conference room, 10 offices with 9 window lined and conference room. |
| 1101 | Immediate | 14,091 | |
| 1104 | Immediate (ILN) | 3,480 | Lobby/Reception area, conference room with built-in bookcase and southern views, 3 window offices with southern views, 1 executive office with southwestern views, 2 window offices with western views, smaller conference room with built-in bookshelves, cubicle areas, breakroom, and storage room. |
| 1200 | Immediate | 22,660 | Full floor with excellent window views. Reception area, 40 window lined offices, 6 interior offices, mailroom, 2 conference rooms, copy room, kitchen, and 2 storage areas. |
| 1415 | Immediate | 3,347 | Reception area, conference rooms and 5 offices. |



Building Amenities and Information:

Building Features Include:

- Remodeled Lobby with state-of-the-art finishes
- Café 906 open for Breakfast and Lunch on Premises
- Banc of California on Premises
- Guided Self-Parking / Valet Parking
- 24-hour on-site security guard

Additional Information:

- Rental rates starting from \$4.25 per rsf. Three-to-ten-year lease terms
- 2.5 parking spaces per 1,000 square feet leased
- Parking rates starting from \$240 for unreserved and \$300-\$330 for reserved on levels P2 and P3
- Remodeled common area restrooms

Gina Guarino / gguarino@heldproperties.com and Matthew Held / mheld@heldproperties.com
pcorrales@heldproperties.com
 310.300.2222